

Membership at Ban Rakat Club

will deliver the most singular golf experience in Thailand



※ Artist's rendering

Welcome to Ban Rakat Club

Opening in 2020, just 35 minutes east of
Bangkok city center

Hello. I'm Gil Hanse and I'm the golf course architect who has been entrusted with creation of the Ballyshear Golf Links at Ban Rakat Club. For my firm, this project is very exciting and special. This is our first project in Thailand. It has also provided us the opportunity to design a golf course on a very unique piece of land — deploying a philosophy that relies heavily not just on the history of this game, but its strategic history. To achieve this, we will utterly transform the landscape. The finished product will not be a museum piece — it will intrigue and excite members with every encounter, just as the traditional courses of Scotland have intrigued golfers for centuries.

The design of Ballyshear Golf Links at Ban Rakat Club is based on the principles and philosophies espoused by two giants of vintage course architecture, Charles Blair Macdonald and his protégé Seth Raynor, who made their marks by replicating in America specific golf holes from classic Scottish links: The Redan at North Berwick, for example. The Alps hole at Prestwick... These holes represent our inspiration and aspiration at Ban Rakat — just as they inspired Macdonald and Raynor at hallowed grounds such as The National Golf Links of America, Chicago Golf Club, and specifically Lido Golf Club, a mythic Macdonald/Raynor design built on Long Island, outside New York City, in 1918.

The Lido is our model because its terrain so resembles the terrain here at Ballyshear. As a result, the character of this golf course will be like nothing else in Thailand. There will be challenge, but members will seek out and embrace that challenge over and over again. Only the finest maintenance conditions — firm and fast, in the links tradition — will enable the strategy we've built into every hole. And so the owners have committed to creating those conditions every day, from Day 1.

We are so looking forward to sharing our vision for Ban Rakat Club. We invite you to come along with us on this voyage into the future, buoyed by golf's glorious past.

Sent S. O.



Gil Hanse

American Gil Hanse, principal and founder of Hanse Golf Course Design, is among the most sought-after architects in world golf. His recent restoration work includes Winged Foot GC in Mamaroneck, NY (host of the 2020 US Open) and Los Angeles CC (site of the 2023 US Open). His original designs include the 2016 Olympic Course in Rio de Janeiro, Brazil and perennial top 100 designs at Castle Stuart Golf Links (Inverness Scotland), Boston Golf Club in Hingham, Massachusetts, USA, and the new, award-winning Black Course at The Streamsong Resort in Bowling Green, Florida, USA.

Golf Courses Crafted by Gil Hanse



Hole
16th



Hole
17th

The Olympic Golf Course



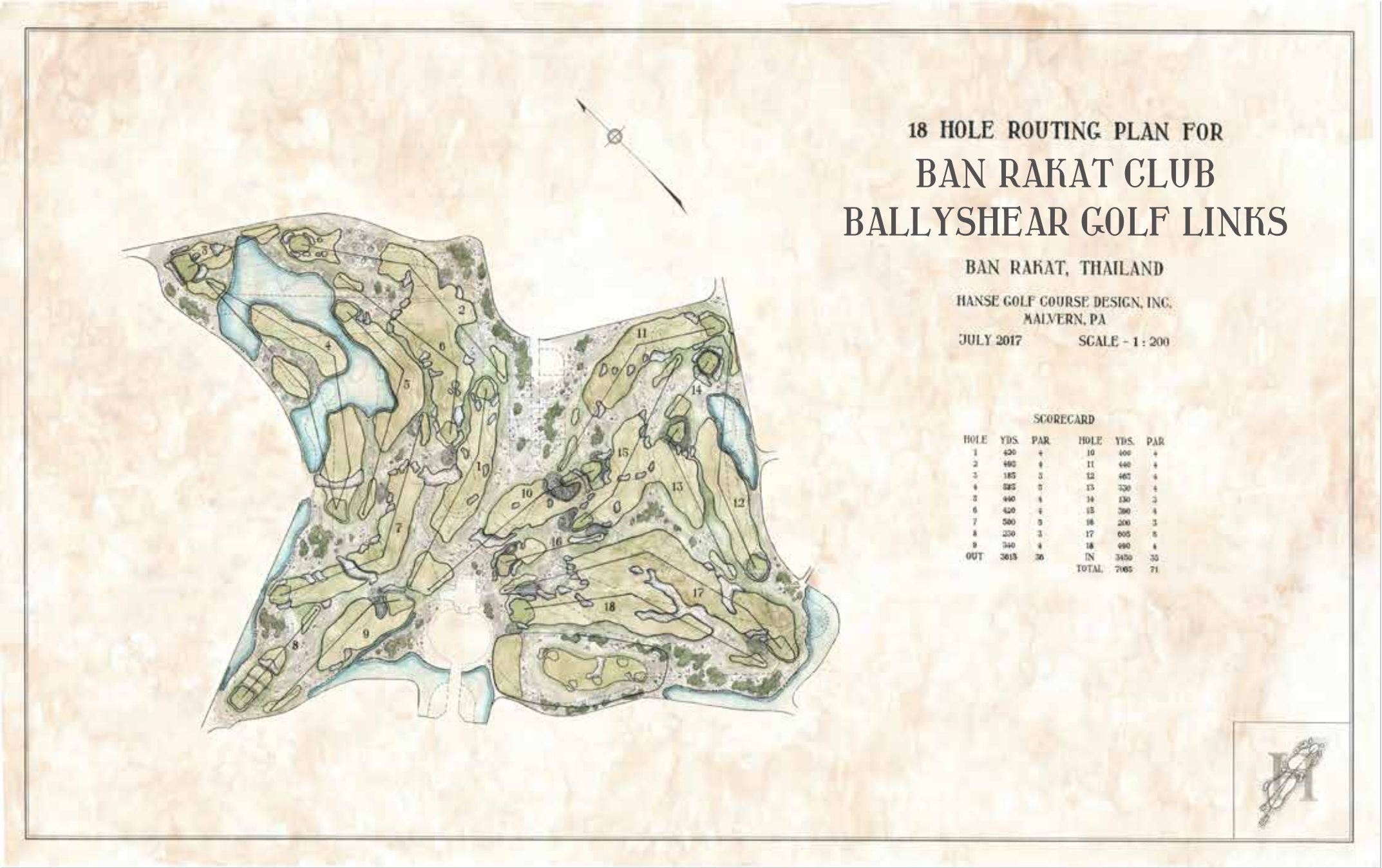
Hole
2nd



Hole
5th

Streamsong Resort Black Course

Hole	
1	First
2	Dog's Leg
3	Eden
4	Channel
5	Cape
6	Plateau
7	Hog's Back
8	Biarritz
9	Leven
10	Alps
11	Lagoon
12	Punch Bowl
13	Knoll
14	Short
15	Strategy
16	Redan
17	Long
18	Home



The Golden Age of Golf Design, a period roughly bounded by the two World Wars, produced an outsized number of American masterpieces. Many came from the hand of architect Charles Blair Macdonald and his protégé Seth Raynor, whose unique templating of classic, old world holes proved foundational to this Golden Age. At Ballyshear Golf Links, Gil Hanse deploys the very same templates — because strategy knows no borders and never goes out of style.



The naming of Ballyshear Golf Links is another homage to Charles Blair Macdonald, who recognized that Long Island, outside New York City, was home to some of America’s most ideal golfing terrain. In 1913, he would build his ancestral estate there, in Southampton, overlooking his iconic design at the National Golf Links of America and the equally formidable Shinnecock Hills GC. Macdonald would dub this new home Ballyshear.



Punch Bowl

Behold, the most common Old World hole that Macdonald/Raynor would template. Originally conceived to gather rainfall (in era prior to mechanized irrigation), the Punch Bowl design deflects inaccurate approach shots, while funneling accurate shots to the pin: risk/reward. At BRC, the Punch Bowl can be found at no. 12.



Redan

Perhaps the most famous of all template holes, Redan is based specifically on the rigorous par-3 15th at North Berwick in Scotland. The Redan (no. 16 at BRC) requires an accurate, low trajectory tee shot that makes use of steep, right-side green contours to find the putting surface. Deep bunkers front and back punish errant, aerial approaches.

Club House

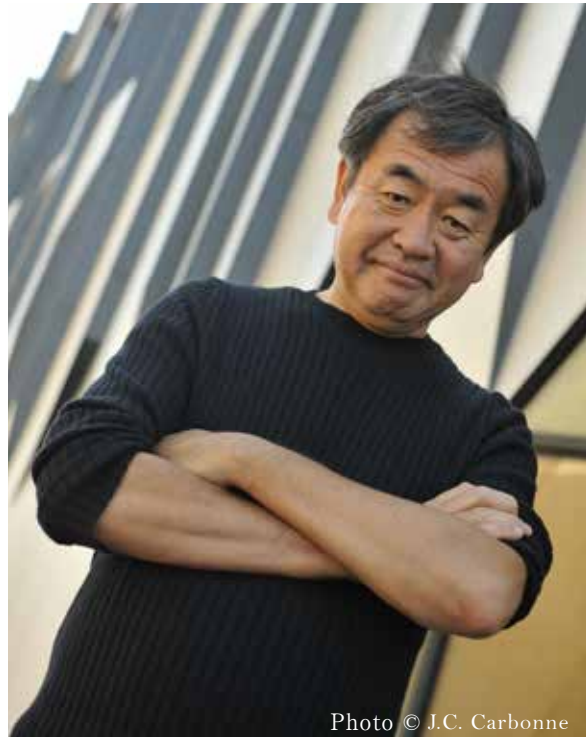
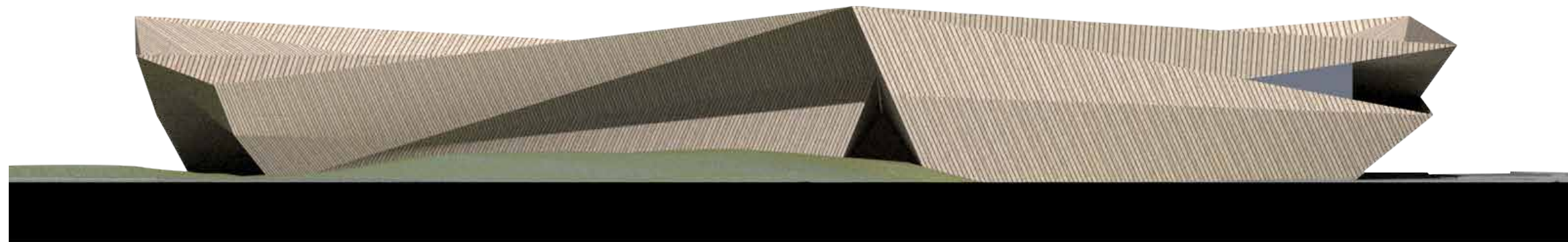


Photo © J.C. Carbonne

Kengo Kuma was born in 1954. Before establishing Kengo Kuma & Associates in 1990, he received his Master's Degree in Architecture from the University of Tokyo, where he is currently a Professor of Architecture. Having been inspired by Kenzo Tange's Yoyogi National Gymnasium, built for the 1964 Tokyo Olympics, Kengo Kuma decided to pursue architecture at a young age, and later entered the Architecture program at the University of Tokyo, where he studied under Hiroshi Hara and Yoshichika Uchida. During his Graduate studies, he made a research trip across the Sahara, exploring various villages and settlements, observing a unique power and beauty. After his time as a Visiting Scholar at Columbia University in New York, he established his office in Tokyo. Since then, Kengo Kuma & Associates has designed architectural works in over twenty countries and received prestigious awards, including the Architectural Institute of Japan Award, the Spirit of Nature Wood Architecture Award (Finland), and the International Stone Architecture Award (Italy), among others. Kengo Kuma & Associates aims to design architecture which naturally merges with its cultural and environmental surroundings, proposing gentle, human scaled buildings. The office is constantly in search of new materials to replace concrete and steel, and seeks a new approach for architecture in a post-industrial society.



● Club Name	Ban Rakat Club
● Course	Ballyshear Golf Links (Par 71/7,065 yards/18 holes)
● Course Designer	Gil Hanse/Hanse Golf Course Design Inc.
● Clubhouse Exterior Design	Kengo Kuma & Associates.
● Clubhouse Interior Design	Februar Image Co., Ltd.
● Clubhouse Construction	Taisei (Thailand) Co., Ltd.
● Club Access	Strictly limited to BRC members and guests; no outside play basis.
● Facilities	Clubhouse, Café, Dining Room, Fully Merchandized Golf Pro Shop, Men's & Women's Locker Rooms, VIP Rooms, Driving Range, Short-Game Practice Complex, Putting Green.
● Address	199-200 Moo 5, Bang na-Trad Road, Km 29 Bang Bo, Samutprakarn 10560 Thailand
● Access	Club located 20 minutes from Suvarnabhumi Airport, 35 minutes from Bangkok city

※The content of this brochure is based on information as of July 2019. Please understand kindly that it may be changed without notice

About Yokohama
International Golf
Club

YIGC is an international golf development and club operations company with 58 years experience in the creation and management of luxury private clubs, in both Japan and Thailand.

About Kiarti Thanee
Country Club

KTCC was founded on the site of Ban Rakat Club in 1989. The golf course was designed by Yosiharu Aihara. For nearly 20 years, its calling card was convenience — just 35 minutes from downtown Bangkok. In 2017, its membership resolved to significantly upgrade its course and club experience via a joint-venture partnership with Yokohama International.

Ban Rakat Club Co., Ltd.
898 Ploenchit Tower 5th floor, Ploenchit Rd. Lumpini Pathumwan Bangkok 10330 Thailand
+66 (0)2 263 0150 sales@brc.co.th